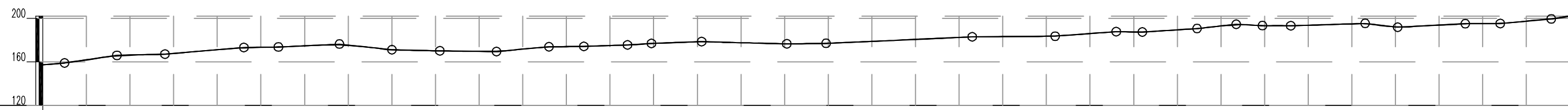


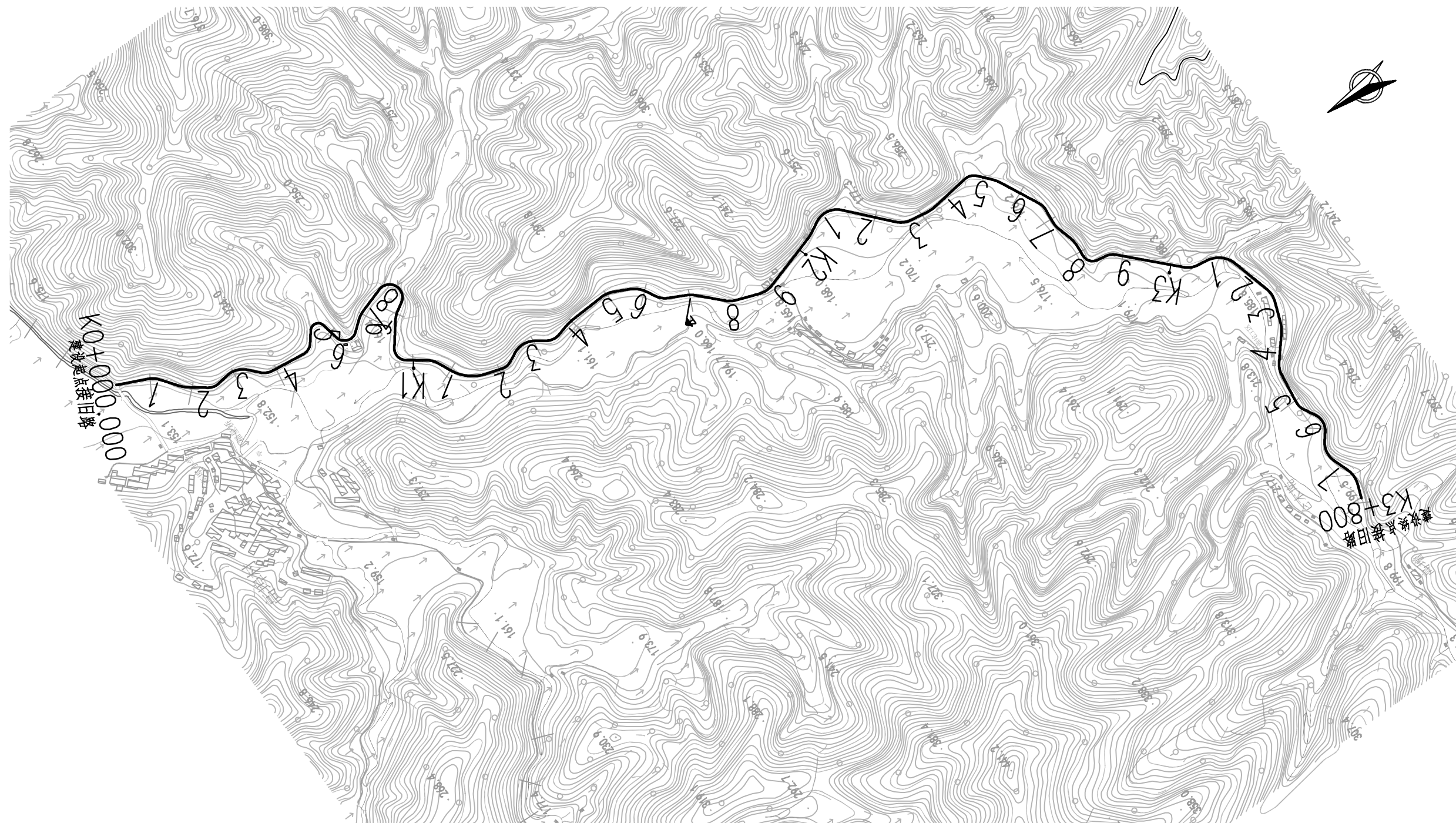
V 1:4000  
H 1:10000

高程

注：  
1、本图尺寸及里程标高均以米计；  
2、图中横向比例为1:10000，竖向比例为1:4000；



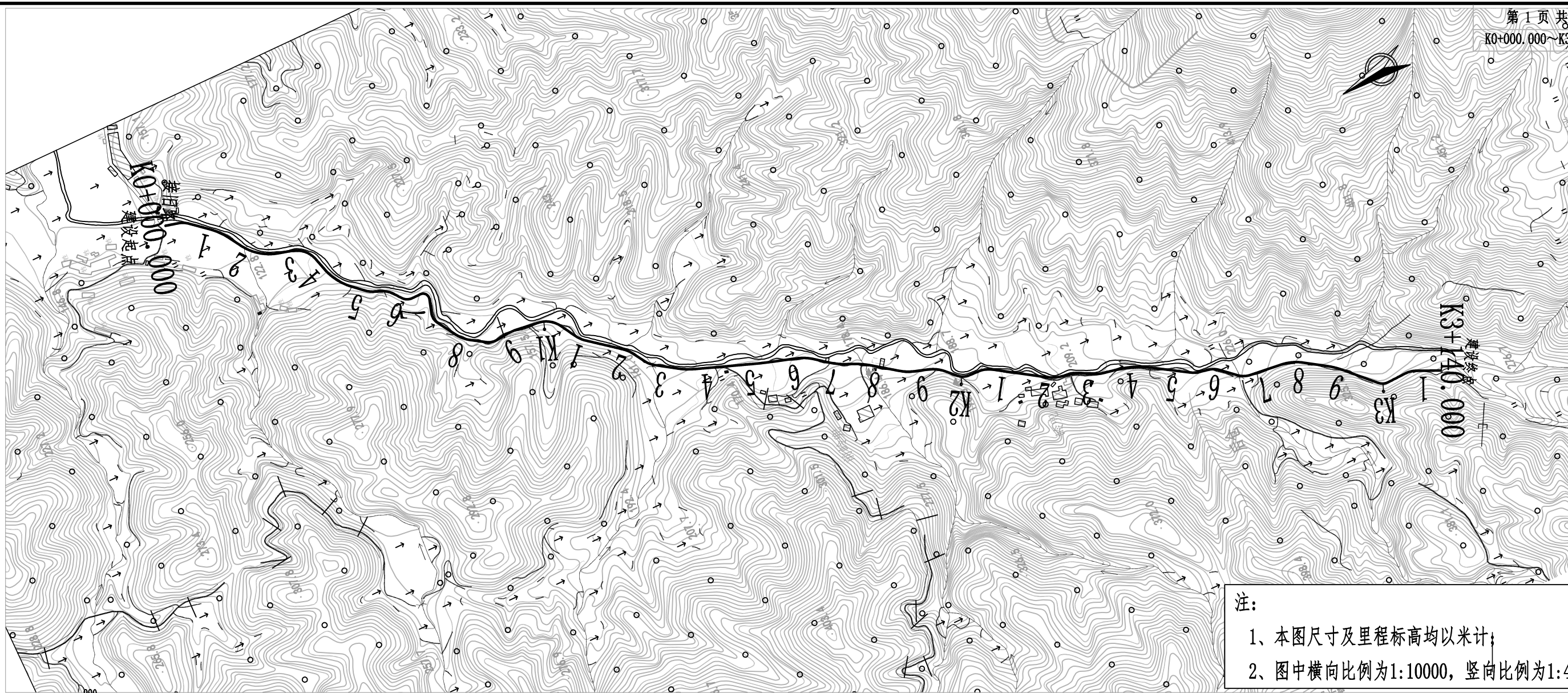
设计高程(m)	157.160	161.893	166.237	167.738	171.138	173.419	174.791	175.237	171.308	170.180	169.695	171.687	174.049	174.986	177.026	178.429	177.629	176.607	177.147	178.878	180.656	182.435	183.179	183.559	185.965	187.488	189.435	193.034	193.304	193.617	194.947	192.281	193.788	195.142	197.387	202.161
地面高程(m)	157.160	161.432	165.887	167.355	170.995	173.161	174.570	174.793	170.831	169.890	169.337	171.780	173.679	174.951	176.774	178.157	177.271	176.222	176.773	178.595	180.314	182.303	182.950	183.280	185.777	187.191	189.156	192.794	193.087	193.382	194.662	191.928	193.495	194.844	197.408	202.161
里程桩号	K0+000.000	1	2	3	4	5	6	7	8	9	K1	1	2	3	4	5	6	7	8	9	K2	1	2	3	4	5	6	7	8	9	K3	1	2	3	4	K3+500.000
坡度	3.00%	5.17%	1.03%	3.40%	0.53%	1.9%	1.38%	0.15%	0.43%	3.61%	0.50%	1.23%	2.43%	1.43%	-1.10%	0.60%	1.78%	0.30%	3.03%	2.82%	4.40%	2.15%	8.10%	1.33%	1.17%	2.08%	0.30%	3.54%	1.17%	2.08%	0.30%	3.54%	1.17%	2.08%	0.30%	3.54%
坡长	30.000	120.000	110.000	180.983	300.000	140.000	120.000	120.000	130.000	130.000	130.000	120.000	120.000	120.000	120.000	120.000	120.000	120.000	120.000	120.000	120.000	120.000	120.000	120.000	120.000	120.000	120.000	120.000	120.000	120.000	120.000	120.000	120.000	120.000	120.000	120.000



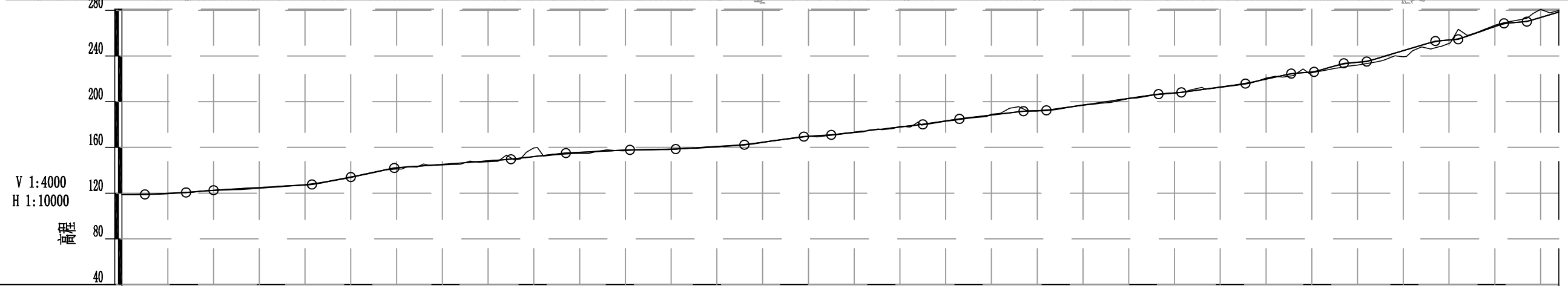
注：  
1、本图尺寸及里程标高均以米计；  
2、图中横向比例为1:10000，竖向比例为1:4000；

高程	200		
	160		
设计高程(m)	202.161	207.053	209.422
地面高程(m)	201.691	206.863	209.187
里程桩号	K3+500.000	6	7
坡度		2.63%	
坡长		720.000	



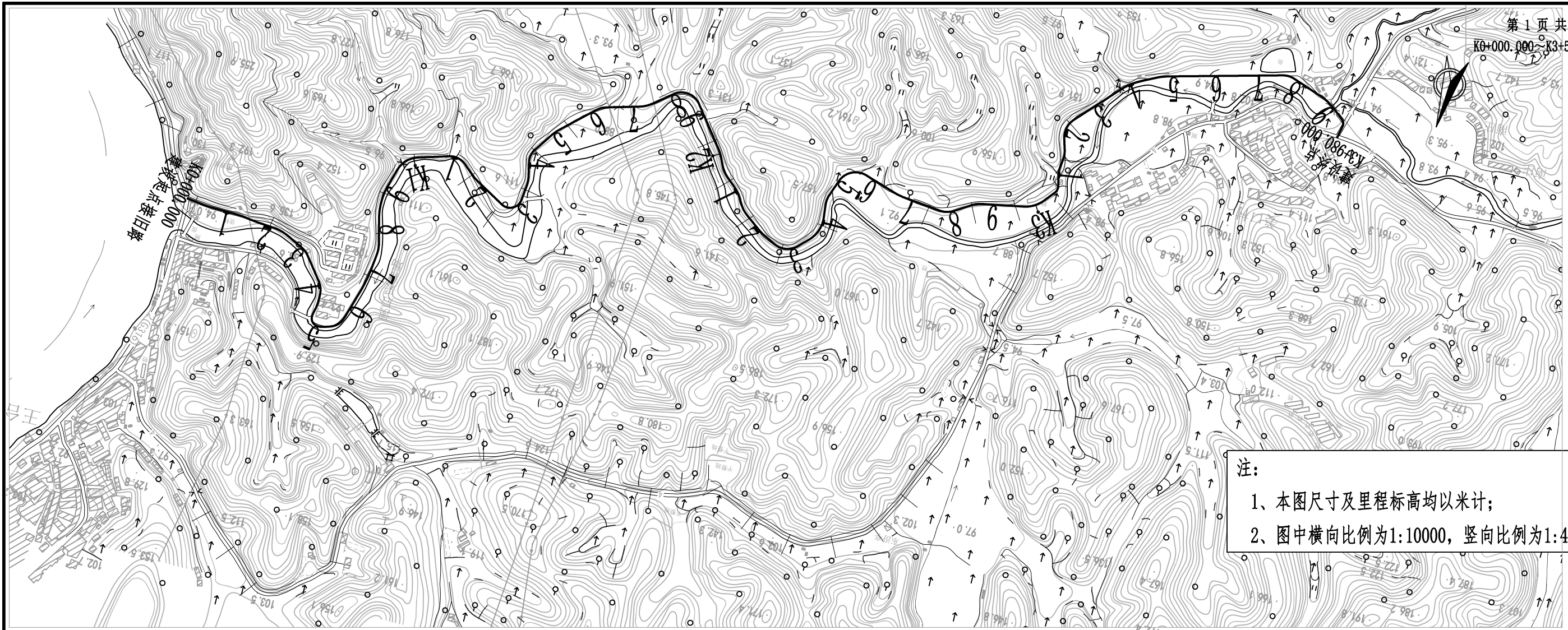


注：  
1、本图尺寸及里程标高均以米计；  
2、图中横向比例为1:10000，竖向比例为1:4000；

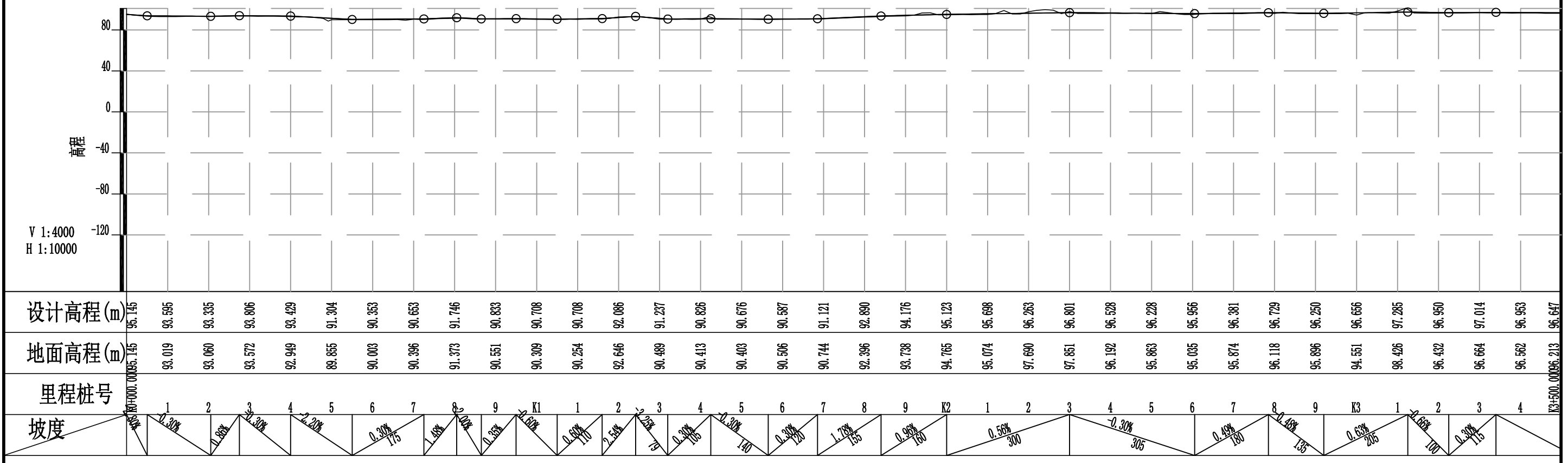


设计高程(m)	118.730	119.039	122.499	124.909	127.440	134.105	141.974	145.199	148.198	151.949	155.699	157.220	158.577	160.949	164.548	169.692	173.298	177.899	183.199	188.359	192.169	197.108	202.909	207.729	212.854	219.927	226.126	234.541	244.732	254.024	265.795	278.880
地面高程(m)	118.726	119.514	122.375	124.386	126.951	133.738	141.116	144.713	147.516	153.571	154.757	157.220	158.194	160.235	164.250	169.635	172.922	178.411	182.909	189.074	191.675	197.056	202.926	207.547	212.512	220.735	225.281	232.020	239.288	251.049	266.883	280.998
里程桩号	K0+000.000	1	2	3	4	5	6	7	8	9	K1	1	2	3	4	5	6	7	8	9	K2	1	2	3	4	5	6	7	8	9	K3	K3+140.000
坡度		1.8%	2.0%	2.35%	1.8%	3.4%	3.0%	2.0%	0.7%	2.5%	5.5%	2.5%	4.6%	5.0%	4.8%	5.8%	2.5%	5.8%	2.5%	5.8%	2.5%	5.8%	2.5%	5.8%	2.5%	5.8%	2.5%	11.9%	2.5%	3.5%	2.5%	
坡长		25	25	25	25	25	25	25	25	25	25	25	25	25	25	25	25	25	25	25	25	25	25	25	25	25	25	25	25	25	25	25

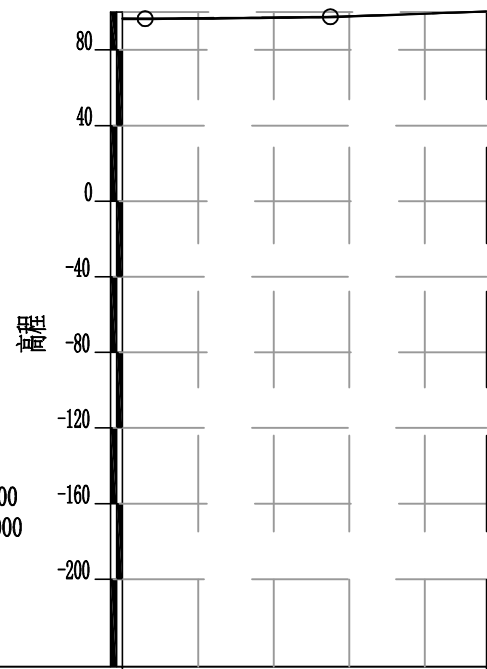
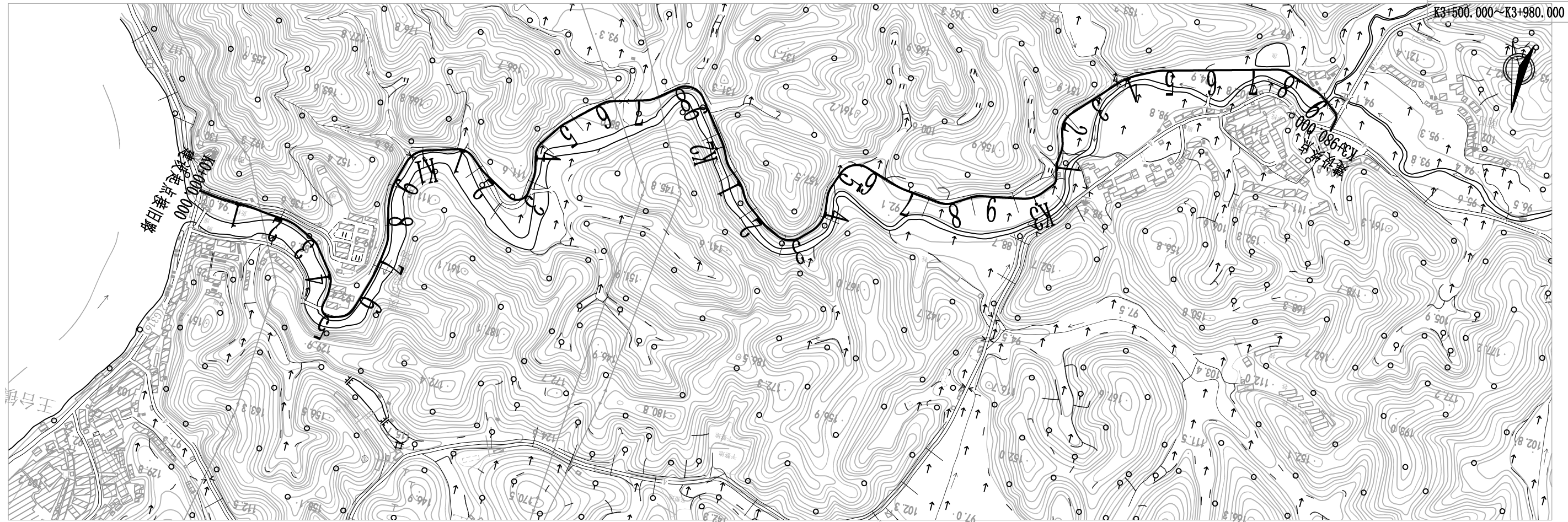




注：  
 1、本图尺寸及里程标高均以米计；  
 2、图中横向比例为1:10000，竖向比例为1:4000；



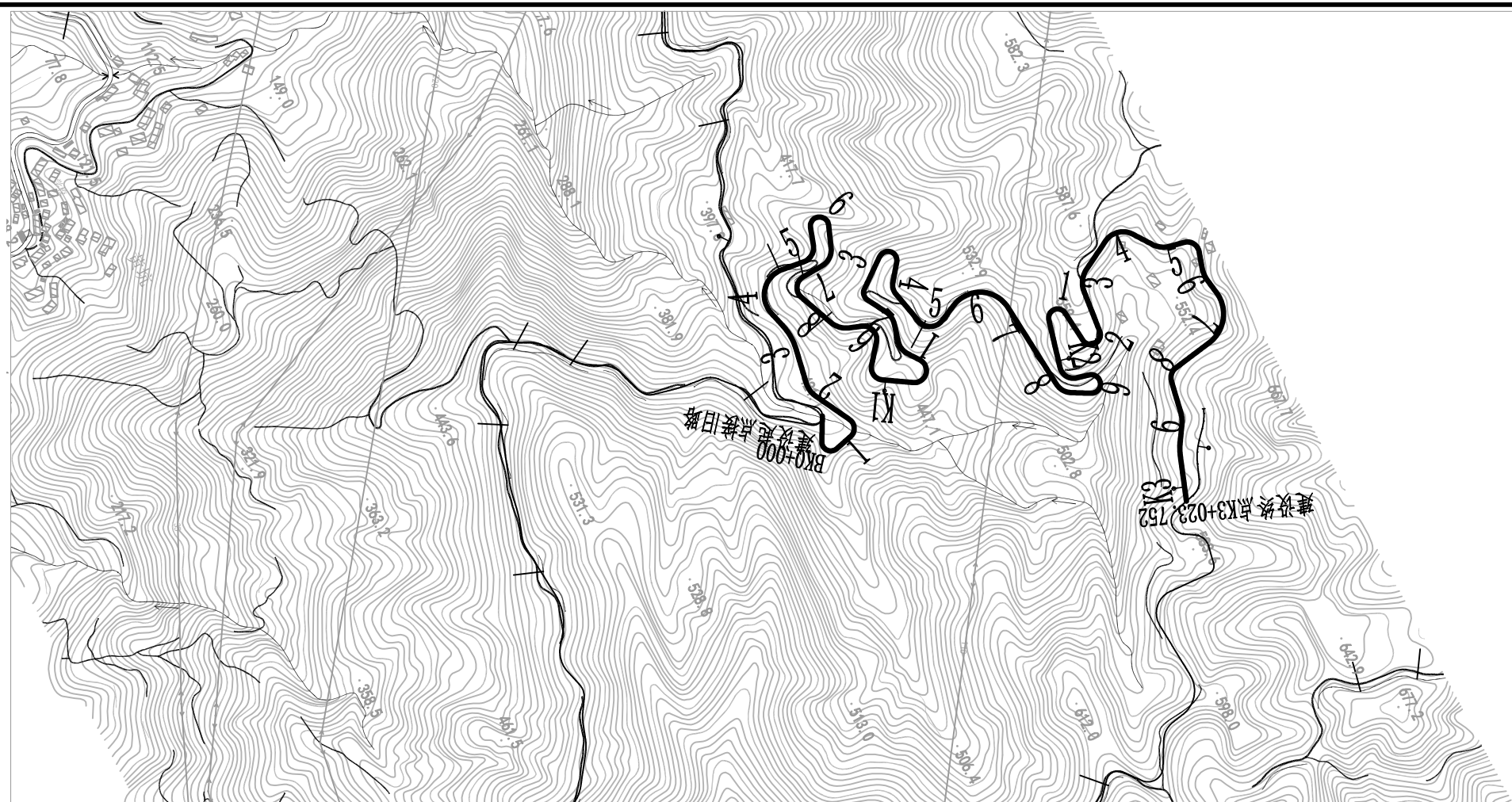




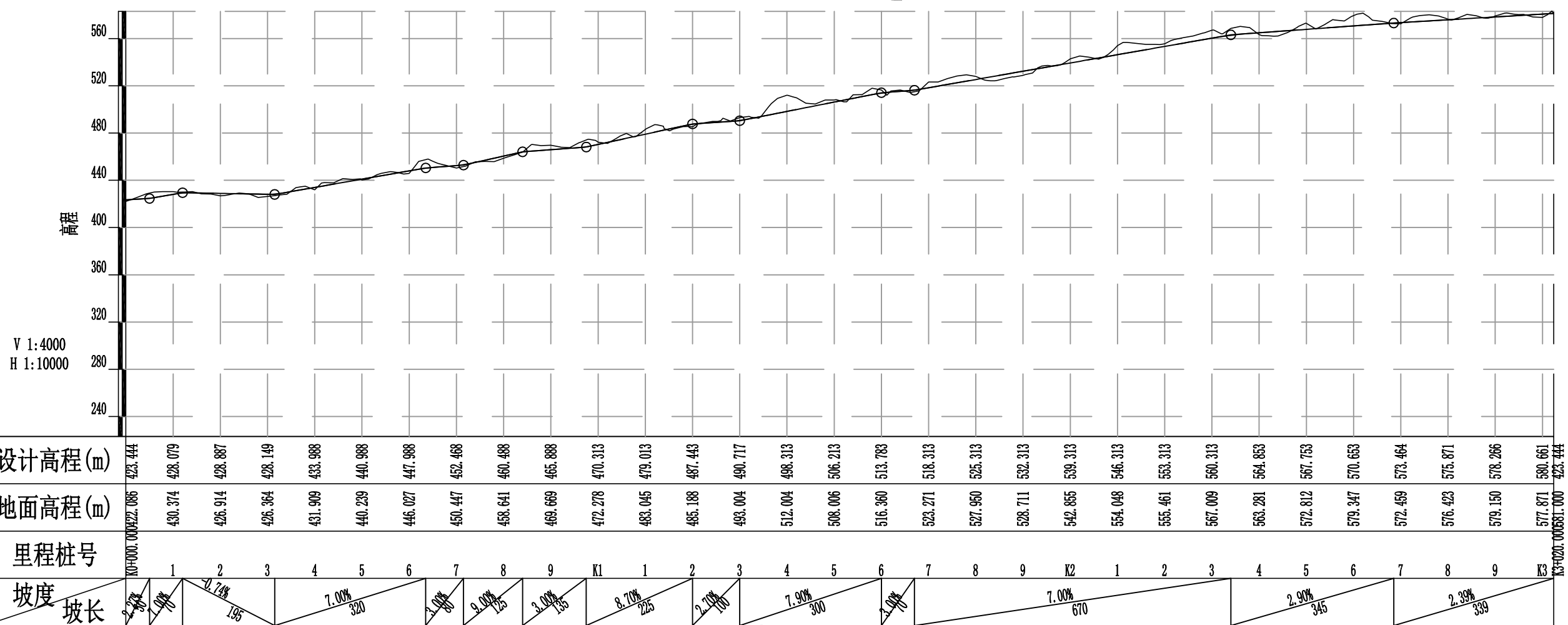
注：  
 1、本图尺寸及里程标高均以米计；  
 2、图中横向比例为1:10000，竖向比例为1:4000；

设计高程(m)	96.647	96.845	97.259	97.907	99.253	96.647
地面高程(m)	96.213	96.354	96.790	97.492	99.042	96.312
里程桩号	K3+500.000	6	7	8	9	K3+980.000
坡度		0.41%		1.35%		
坡长		245		206		

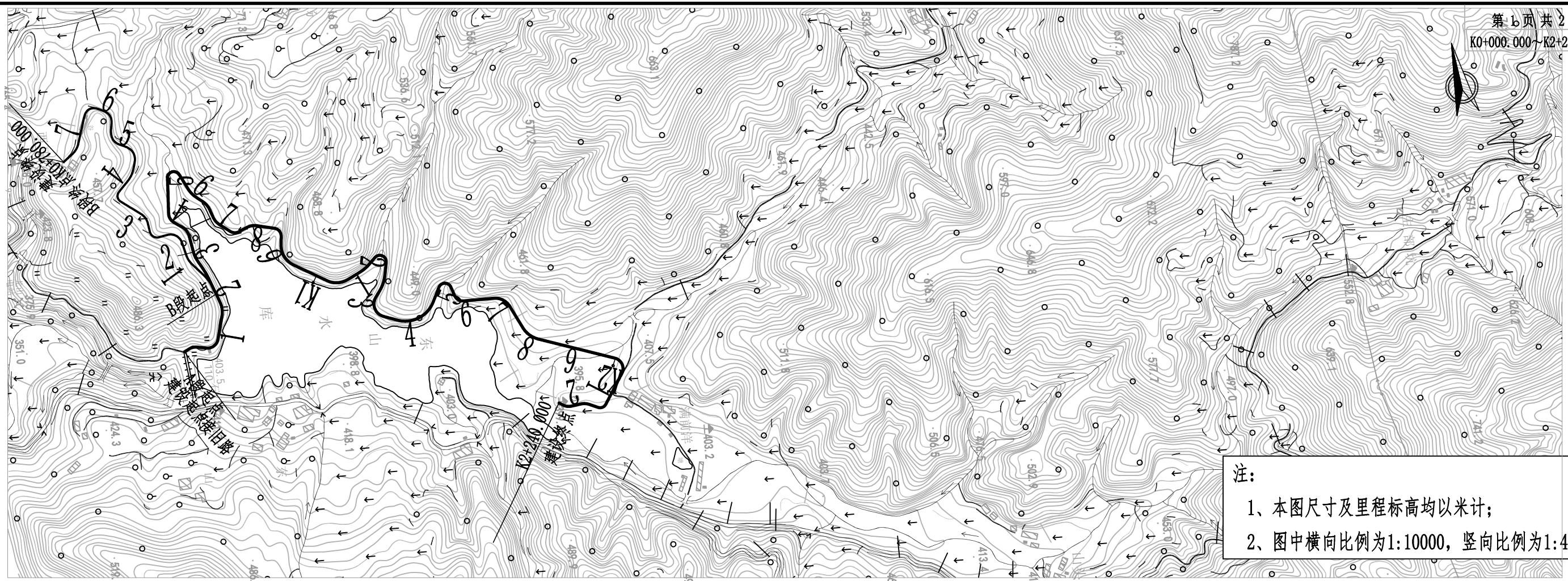




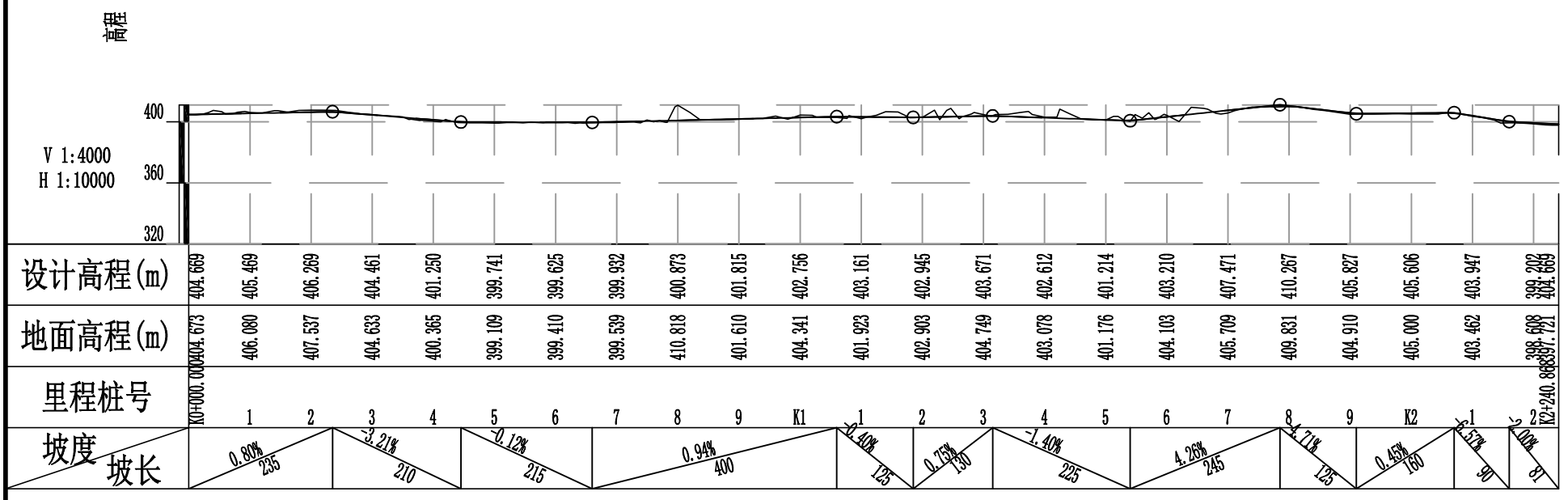
注：  
1、本图尺寸及里程标高均以米计；  
2、图中横向比例为1:10000，竖向比例为1:4000；







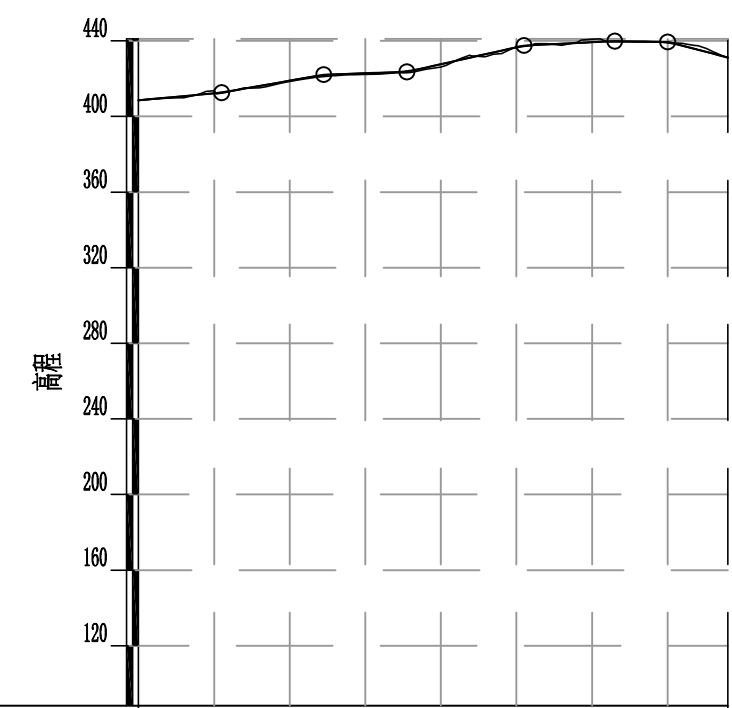
注：  
1、本图尺寸及里程标高均以米计；  
2、图中横向比例为1:10000，竖向比例为1:4000；







注：  
1、本图尺寸及里程标高均以米计；  
2、图中横向比例为1:10000，竖向比例为1:4000



设计高程 (m)	408.596	412.314	418.962	422.877	427.657	436.501	439.279	439.074	408.596
地面高程 (m)	408.596	413.584	418.567	422.248	426.127	437.003	440.942	439.130	40430.842
里程桩号	K0+000.000	1	2	3	4	5	6	7	K0+780.000
坡度		3.63%	7.09%	1.33%	9.09%	1.91%	2.53%		
坡长		110	135	110	135	120	70		